

Clearview Pioneer / Vision and Solution Stoves

Please read manufacturer's instructions before use.

Use a stove thermometer at all times.

Do not use wet wood, petcoke, MDF, chip-board or other waste products.

The internal parts of this stove are consumable items, worn parts need to be replaced as soon as possible to prevent damage to the appliance.

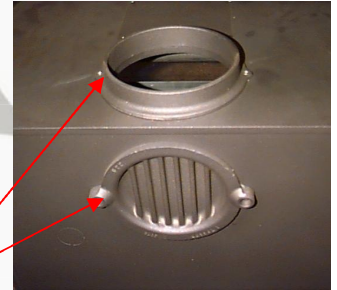
Do not wipe the surface of the stove with a damp cloth as this could mark the paint surface or cause rust to form.

If you wish to adjust the tension on the door handle this can be done with the door open, simply turn the handle clock wise to make it easier to close or anti clock wise to make it harder or to give a better seal.

Door hinges are adjustable.

To adjust - open door and carefully lift the door off the hinges. Turn the hinge block clock wise to tighten the door seal or anti clockwise to slacken door. A good way of testing the seal is to place a single piece of paper between the door and the stove body.

You should only just be able to pull the paper through, if it slides easily the seal is insufficient.



Control of the stove is made from the two air controls on the stove, the wheel valve located below the glass is the primary air control used for starting the appliance and when using solid fuels and closed or nearly shut when using wood.

The secondary air control is the slide under the stove this is the most important control, pulling it out gives you more air to the air wash, which will keep the glass clear, pushing it in will slow the burning rate of the fire (see lighting instructions).

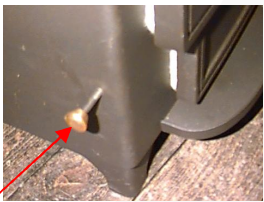


If you require a top outlet unbolt the blanking disc from the top and remove it from stove.

Unbolt the flue spigot from the back of the stove and bolt onto the top of appliance.

Now place the blanking disc on the back of the stove, with the ribbed side facing outwards, and bolt into place. If you fit it the other way round it will foul the back brick.

The baffle plate is located in the top of the fire box please clean this monthly by drawing it forwards and gently rattling it. When finished push it back so it rests against the back brick.

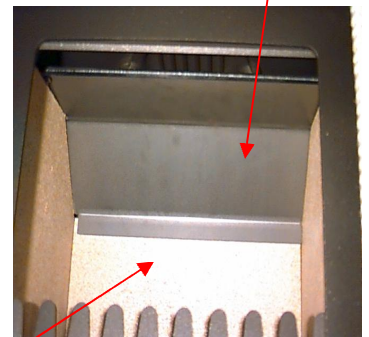


Both the Pioneer and the Vision have a simple rotating grate, the Vision has the operating handle on the left of the stove and the Pioneer is on the front of the stove (bottom left).

Do not over riddle the firebed.

If the riddle bar comes off, open the fire door and remove the ashpan, tilt the grate downwards, then place the end of the riddle arm so that the hooked end drops into the arm on the grate centre.

To prevent the glass from being permanently marked or crazed, make sure the log guard is the right way round, leaving a gap between the Glass and the fuel. This picture shows the correct gap.



On all Clearview stoves the back fire bricks may show an expansion crack down the centre of the brick. This is quite normal and doesn't require replacement.

Optional stove thermometer.

Stove should be run between 300°F and 550°F. Ideal refuelling temperature is approx. 250°F.



This help sheet is for guidance only. Please refer to manufacturers instructions.

GENERAL ADVICE TO PREVENT TAR AND CONDENSATION PROBLEMS WITH WOODBURNING STOVES.

Only burn dry seasoned wood. This means wood that has been stored in the open with only a cover on the top and open at the sides for at least one year. It should be greyish in colour and feel very light. Keep the size of the firewood to between 75mm and 100mm or 3" to 4" in diameter.

Unseasoned wood can contain tars and water which will make up at least one third of its total volume.

Always use a stove thermometer and never run the appliance under 300°f as this may cause the stove glass to soot up. Use the secondary air control (not the primary control) to regulate the output of fire. Try to only burn one log at a time and let the fire die down before refuelling. Place the fresh fuel towards the back of the firebox. Do not fill all the firebox with fuel / wood. Leave room for oxygen which is vital for correct combustion.

Before shutting down the appliance for overnight use

- Refill the stove
- Fire the appliance at a high temperature for at least 20 minutes
- Only shut the primary air control and keep the secondary air control partially open do not let the flame disappear completely.

The use of unseasoned wood will lead to problems with tar and condensation damaging your chimney. It will also produce very strong odours throughout the home which are very hard to eradicate.

If you only use the appliance at weekends or occasionally please preheat the flue by lighting a piece of newspaper in the stove. Leave the door slightly open and let it burn out and then light the stove in the normal way.

In very cold weather, bring the wood into the house a day before you want to use it. This will bring the wood up to room temperature making it easier to burn. We recommend that you should only burn wood with chimneys lined with pumice or stainless steel and backfilled with insulation.

THIS INFORMATION IS FOR GUIDANCE ONLY.

PLEASE REFER TO MANUFACTURERS INSTRUCTIONS AND BUILDING REGULATIONS.

WE RECOMMEND YOUR CHIMNEY IS LINED.

ROBEYS CANNOT BE HELD RESPONSIBLE FOR DAMAGE TO ANY APPLIANCE, CHIMNEY, LINING OR PROPERTY BY THE USE OF UNSEASONED WOOD OR WASTE PRODUCTS IE. RAILWAY SLEEPERS, MDF, CHIPBOARD, WOOD SHAVINGS ETC.